



# WALLACE COMMUNITY COLLEGE

Dothan • Eufaula

## Summer Facts 2024



## Summary

Wallace Community College – Dothan (WCCD) enrolled 2,294 students in Summer 2024. The majority of students enrolled were female (70%), White (55%), and/or enrolled part-time (84%). The majority of students resided in Houston County (38%).

Programs with the highest enrollment included General Studies, Associate Degree Nursing, and Cosmetology. Summer 2024, there were 474 course sections offered totaling 16,605 credit hours.

1,157 students received Pell in Summer 2024 totaling \$2,197,986.00 with the average aid being \$1,899.73. The majority of students receiving Pell were female (78%), White (45%), and/or part-time (79%).

In Summer 2024 WCCD employed 121 full-time faculty with a cumulative credit hour production of 30,029 and 39 part-time with a cumulative credit hour production of 3,516.

### Mission

George C. Wallace Community College – Dothan, a comprehensive community college, inspires and facilitates learning to prepare its constituents for current and emerging opportunities and to promote economic and social development.

### Statement of Vision

Wallace Community College - Dothan will be a leading community college, nationally recognized for excellence and innovation in education and student success. The College will be the primary choice of citizens preparing for the job market, seeking an associate or advanced degree, and/or pursuing career advancement or personal development. College partnerships with area schools, business and industry, and governmental agencies will contribute to the enhancement of economic development and quality of life in the region.

### Statement of Values

George C. Wallace Community College respects the diversity of its student body and recognizes the worth and potential of each student. Therefore, the College affirms the following values:

**Commitment to Students**—Belief in providing quality, accessible instruction, resources, and support services to enhance the growth and development of students.

**Commitment to Faculty and Staff**—Belief in the importance of providing a work and learning environment characterized by integrity, clear communications, open exchange of ideas, involvement in decision making, and respect for all individuals.

**Commitment to Community**—Belief in enhancing the economic vitality and quality of life for all citizens of the community.

**Commitment to Diversity**—Belief in acknowledging and respecting the diversity of the community.

**Commitment to Excellence**— Belief in the pursuit of excellence in all College programs and services.

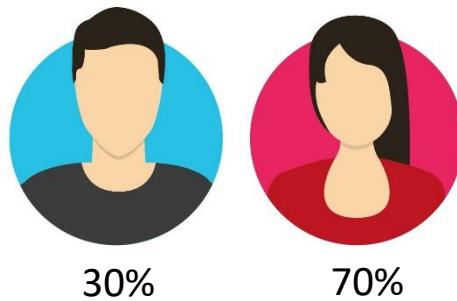
## Summer 2024 Enrollment

Total Enrollment – 2,294      FTE – 1,107  
 Full-Time – 376              Part-Time – 1,918  
 Dual Enrollment - 245

### Enrollment By Status



### Enrollment By Gender



Race	Total	Race	Total
Non-Resident Alien	6	Asian	33
Hispanic/Latino	161	White	1,254
American Indian/Alaskan Native	6	Two or more races	123
Native Hawaiiin/Pacific Islander	3	Unknown	3
Black/African American	705		

## Summer 2024 Enrollment cont.

### Top 5 Counties

County	Total
Houston	868
Dale	348
Barbour	170
Henry	159
Coffee	148



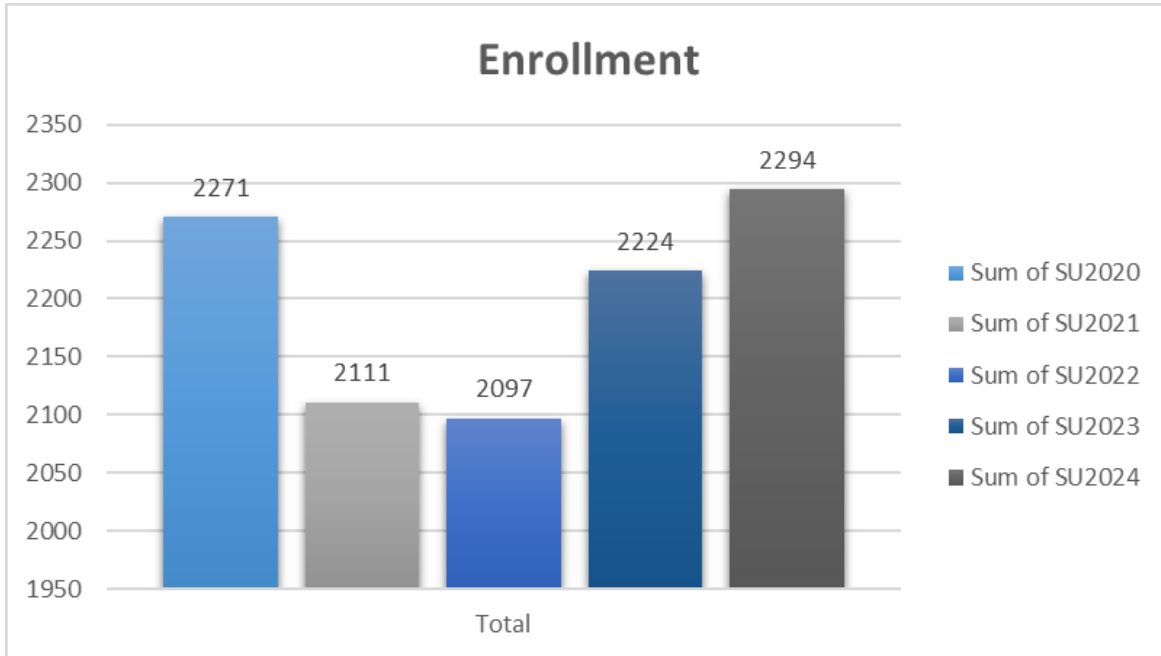
### Top 5 High Schools

High School	Total
Dothan High	206
Rehobeth High	119
Carroll High	115
Eufaula High	100
Northside Methodist	91

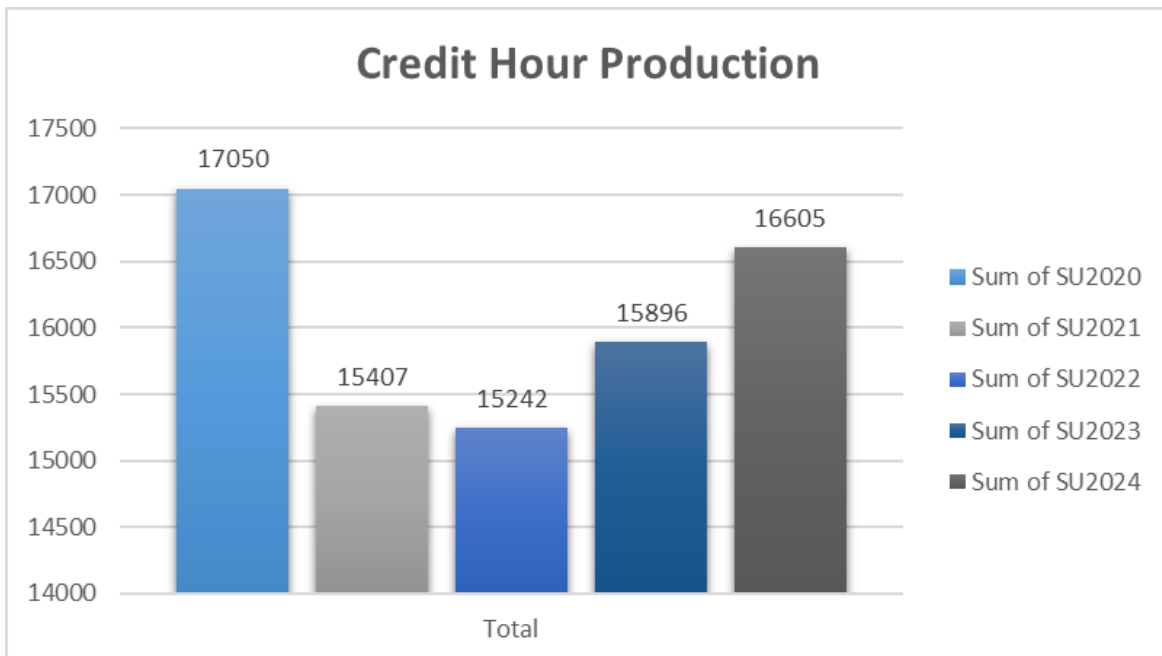
Age Categories	Headcount	Full-Time	Part-Time
Under 18	261	6	255
18 - 19	465	86	379
20 - 21	394	77	317
22 - 24	323	63	260
25 - 29	288	45	243
30 - 34	217	36	181
35 - 39	115	23	92
40 - 49	174	27	147
50 - 64	49	9	40
65 and over	8	4	4

Program Name	CIP Code	Headcount
Administrative Assistant and Secretarial Science	52.0401	78
Automotive Engineering Technology	15.0803	26
Child Care and Support Services Management	19.0708	48
Computer and Information Sciences	11.0101	56
Cosmetology/Cosmetologist	12.0401	101
Criminal Justice/Police Science	43.0107	33
Drafting and Design Technology/Technician	15.1301	14
Electrician	46.0302	32
Emergency Medical Technology/ (EMT Paramedic)	51.0904	43
General Studies	24.0102	780
Heating, Ventilation, Air Conditioning and Refrigeration Engineering Technology	15.0501	39
Industrial Mechanics and Maintenance Technology	47.0303	25
Liberal Arts	24.0101	77
Licensed Practical Nurse	51.3901	93
Medical/Clinical Assistant	51.0801	58
Physical Therapy Technician/Assistant	51.0806	21
Radiologic Technology	51.0911	20
Registered Nursing/Registered Nurse	51.3801	336
Respiratory Care Therapy/Therapist	51.0908	8
Surgical Technology	51.0909	5
Undeclared	90.0000	347
Welding Technology	48.0508	54

## Summer Enrollment Trends



SU2020	SU2021	SU2022	SU2023	SU2024
2,271	2,111	2,097	2,224	2,294



SU2020	SU2021	SU2022	SU2023	SU2024
17,050	15,407	15,242	15,896	16,605

## Summer 2024 Enrollment by Discipline

Discipline	Credit Hour Production	Total Registration	# Sections
ACR	417	139	10
ACT	27	9	1
ART	270	90	5
ASE	189	63	10
BIO	1780	445	23
BUS	519	173	10
CHD	288	96	9
CHM	124	31	2
CIS	973	327	17
COM	42	14	1
COS	891	297	17
CRJ	258	86	13
DDT	124	38	4
ECO	210	70	5
ELT	177	59	6
EMS	364	137	15
ENG	795	275	25
ENR	24	6	1
HED	54	18	1
HIS	588	196	14
HOC	18	6	1
HPS	96	32	2
HUM	60	20	1

Discipline	Credit Hour Production	Total Registration	# Sections
INT	192	64	9
LDR	105	35	3
MAT	279	102	15
MTH	989	326	50
MUL	40	20	4
MUP	24	12	3
MUS	270	90	7
NUR	2803	483	75
OAD	162	54	3
ORI	454	192	14
ORT	12	12	2
PHL	231	77	6
PHS	208	52	3
PHY	50	20	4
PSY	627	209	13
PTA	180	80	5
RAD	190	57	8
REL	39	13	1
RPT	67	22	5
SPH	819	273	15
SUR	24	6	2
WDT	528	176	33
WKO	24	8	1

### Summer 2024 Remedial

Remedial Students	
Math Only	72
English Only	19
Math and English	2

### Summer 2024 Financial Aid

Type Aid	Total
Pell	\$2,197,986.00
SEOG	\$95,262.00
Federal Work Study	\$16,800.00
Institutional Grants	\$423,238.75
State/Local Grants	\$229,176.17



### Degrees Awarded – Summer 2024

Program	CIP Code	AA	AAS	AS	CER	STC	Total
Administrative Assistant and Secretarial Science	520401	0	7	0	0	6	13
Automotive Engineering Technology	150803	0	2	0	3	4	9
Child Care and Support Services Management	190708	0	3	0	1	2	6
Computer and Information Sciences	110101	0	1	0	0	10	11
Cosmetology/Cosmetologist	120401	0	0	0	13	13	26
Criminal Justice/Police Science	430107	0	4	0	0	0	4
Drafting and Design Technology	151301	0	2	0	0	10	12
Electrician	460302	0	3	0	0	2	5
Emergency Medical Technology (EMT Paramedic)	510904	0	0	0	0	18	18
General Studies	240102	0	0	24	0	35	59
Heating, Ventilation, Air Conditioning and Refrigeration	150501	0	1	0	3	4	8
Industrial Mechanics and Maintenance Technology	470303	0	0	0	0	1	1
Liberal Arts and Sciences	240101	4	0	0	0	0	4
Licensed Practical Nurse	513901	0	0	0	23	0	23
Medical/Clinical Assistant	510801	0	1	0	0	1	2
Registered Nursing	513801	0	25	0	0	0	25
Welding Technology	480508	0	0	0	3	3	6

